

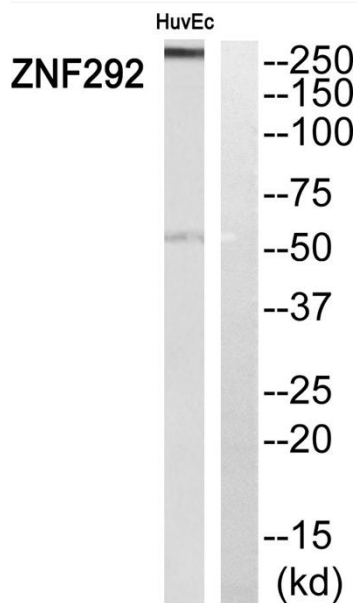


ZN-16 Polyclonal Antibody

Catalog No	YP-Ab-02176
Isotype	IgG
Reactivity	Human;Rat;Mouse;
Applications	WB;ELISA
Gene Name	ZNF292
Protein Name	Zinc finger protein 292
Immunogen	The antiserum was produced against synthesized peptide derived from human ZNF292. AA range:1311-1360
Specificity	ZN-16 Polyclonal Antibody detects endogenous levels of ZN-16 protein.
Formulation	Liquid in PBS containing 50% glycerol, 0.5% BSA and 0.02% sodium azide.
Source	Polyclonal, Rabbit,IgG
Purification	The antibody was affinity-purified from rabbit antiserum by affinity-chromatography using epitope-specific immunogen.
Dilution	Western Blot: 1/500 - 1/2000. ELISA: 1/40000. Not yet tested in other applications.
Concentration	1 mg/ml
Purity	≥90%
Storage Stability	-20°C/1 year
Synonyms	ZNF292; KIAA0530; Zinc finger protein 292
Observed Band	300kD
Cell Pathway	Nucleus .
Tissue Specificity	Bladder,Brain,Human endometrium,Placenta,Thalamus,
Function	function:May be involved in transcriptional regulation.,PTM:Phosphorylated upon DNA damage, probably by ATM or ATR.,similarity:Belongs to the krueppel C2H2-type zinc-finger protein family.,similarity:Contains 9 C2H2-type zinc fingers.,
Background	function:May be involved in transcriptional regulation.,PTM:Phosphorylated upon DNA damage, probably by ATM or ATR.,similarity:Belongs to the krueppel C2H2-type zinc-finger protein family.,similarity:Contains 9 C2H2-type zinc fingers.,
matters needing attention	Avoid repeated freezing and thawing!
Usage suggestions	This product can be used in immunological reaction related experiments. For more information, please consult technical personnel.



Products Images



Western blot analysis of ZNF292 Antibody. The lane on the right is blocked with the ZNF292 peptide.